

Bar Code Verification System

CSPL 1850 BV
BAR CODE VERIFY



Specific requirements for Global serialisation as per GS1 in the pharmaceutical industry require a variable data printing solutions. CSPL culture has been shown in our solutions, built with standards of GMP – Compliant design, data security is our prime focus and will follow guide line of 21 CFR Part 11 and barcode reading tools follow ISO standard of 150415 and 150416.

CSPL 1850 BV “Off line Bar Code Verification System” is fast and reliable system for flat carton to fulfil all international requirements for Bar Code Verification system.

Highlighting feature it can handle normal as well as lock bottom flat cartons. The system is designed for offline operation but data can be transmitted on the fly hence parallel activity for further operation of carton filling and packing can be carried out without time loss.

Powerful front hand software gives access control for Operator, Supervisor, Manager and Admin level to ensure the security and functionality.

Edge over advantages are eye opening to think beyond with key benefits like, CSPL 1070BV is the only system that bring the benefits like it verify all type of barcodes like Pharma Code, 1D and 2D barcode which is pre-printed to verify there is no mix in carton or barcodes are properly printed and readability. It reject the wrong cartons with queue management so wrong carton should not go for production.

Technical Specification

Compliance to	: CE directives. 21 CFR Part 11
Conveyor unit dimensions	: Length 1900 mm Width 1210 mm Height 1680 ± 50 mm
Working height	: 800 mm ± 50 mm
Weight	: 230 kg. (approx.)
Belt speed	: 10-50 m/min
Running direction	: Left to right
Cabinet	: Non-corrosive pharma standard
Top cover	: Transparent polycarbonate Cover equipped with safeguard switch to stop the machine if opened during production
Reject bin	: Reject bin secured with key lock
Reject system	: Mechanical rejection mechanism, No air Needed
Mountings	: Integrated mounting bracket camera positioning
Rejection mechanism	: Mechanical Flaper with actuator
Emergency operation	: Switch on front panel. Hardware controlled emergency stop function

Feeder

Maximum product size	: 300 x 300 mm
Minimum product size	: 50 x 76 mm
Product thickness	: 80 gsm to 500 gsm
Fedding speed	: 100 m/min
Motor	: DC motor

Connection / Input & Output

External connections	: Main power, air pressure, up-stream down-stream machine control signals, LAN
-----------------------------	--

Electrical connection	: Voltage: 230 VAC (± 10%)
Frequency	: 50 / 60 Hz
Product position	: Through Sensor & Encoder tracking
Machine controller	: PLC
Input / Output	: 18 Input & 12 Output

Vision System

Camera & Lenses Resolution	: Camera - 1.3 Mega Pixel and Lens - 1.3 megapixel with 8 mm focal length (varies on application demand)
Inspection area	: 40 (H) x 60(W) mm (Depend on Selection of Camera and Lens)
Light	: Integrated light Shielding
Verification	: Verification of pre-printed Image Comparison, 1D & 2D codes EAN13, Code128, PHARMACODE, Data Matrix, QR Code, PDF 417, AZTEC, CODE 39 & many more...
Grading	: Quality of 2D code is determined Grade level between F and A (0-4).
Qualification	: In accordance with industrial standards, printed items ISO/IEC 15415 and 15416
Data matrix standard	: According to GS1 and ISO/IEC 16022

Silent features

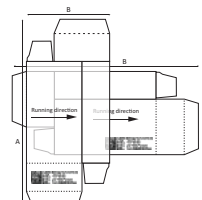
QC sampling

Production

Inspection position	: Inspection from top
----------------------------	-----------------------

Carton size (min. - max.)

50-297 mm (leading edge)
76-297 mm (printed side)



- Throughput** : Up to 200 cartons per minute
Precise position : "Q" Management for Cartons
Display : 17" Touch monitor
Software : CSPL 1850 GUI to control all parameters and to comply 21 CFR Part 11

Interlocking

Queue control management for accepted carton & rejection carton. Up-stream/down-stream verification (Like cartonator and bundler). Errors & Warning alarm log with time stamp for :

- Emergency Stop
- Drive Failure
- Consecutive rejection
- Rejection Failed
- No Encoder Pulse
- Safety door Open
- Product Sensor Block
- Queue Missing
- Accepted sensor Block
- Rejection bin sensor Block

Report Output

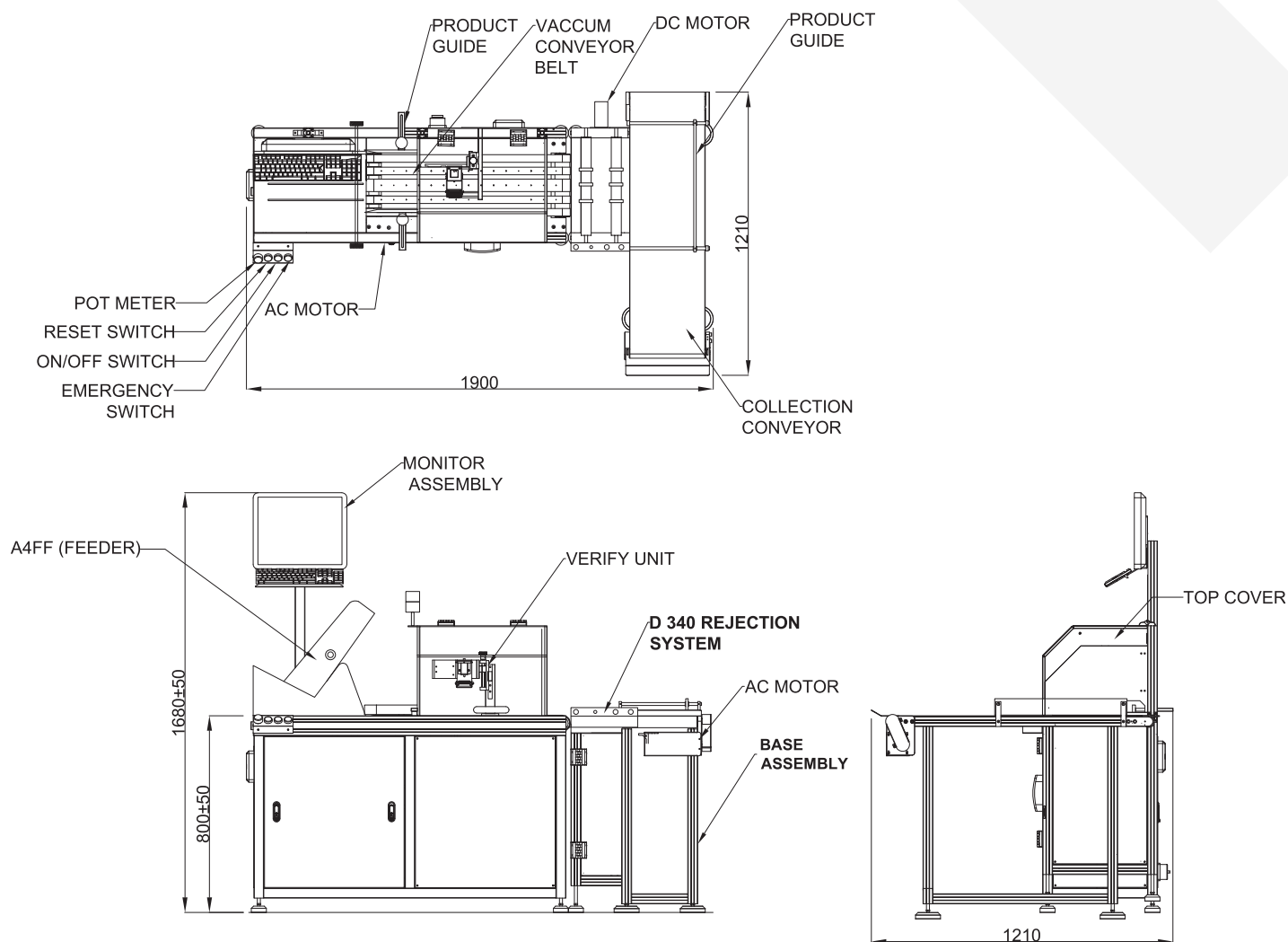
Batch Summary Report, Batch Detail Report, Audit Trail Report, Alarm Log Report, Sample Report

USP of the System

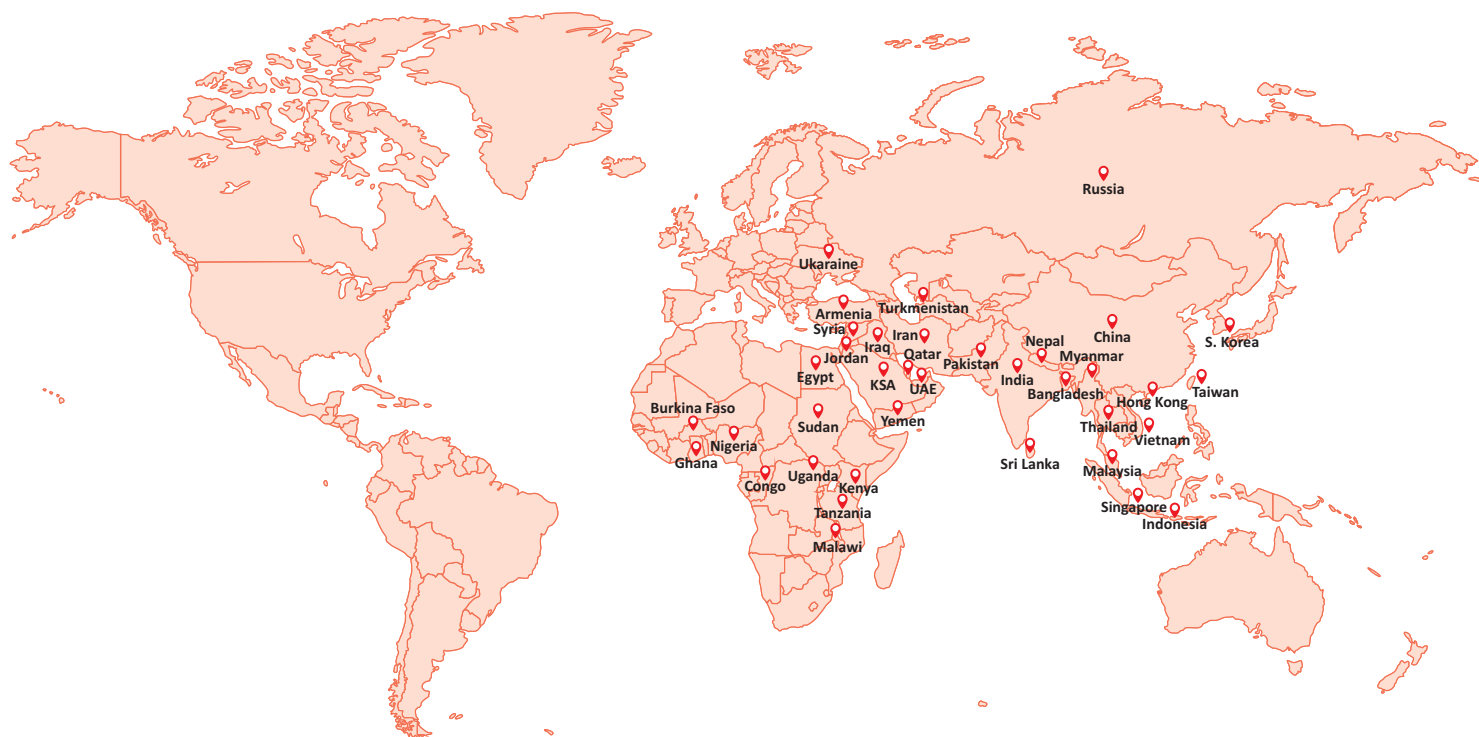
Convincing Highlights

- Solution design for lock bottom and flat cartons /cut labels / Leaflet / outserts
- Integrated collection conveyor for the smooth operation
- No compressed air required
- ISO standard verification of barcode
- In single pass, it can verify OCR, 1D, 2D, Pharmacode
- Elaborate and precise transport belt gives reproducible quality even at high speed up to 200 units/min
- Format change takes less than 5 minute
- Consecutive rejection control
- Q' management for every carton enter in the system
- All errors and warning log with time stamp for audit requirements
- Exhaustive validation documentation as per GAMP5
- Industry accepted yet customer required design of report generation
- 21 CFR Part 11 compliance

GA Drawing



Global Presence



CONDOT[®]
SYSTEMS PVT. LTD.

Head Office

Unit No. 122, Niraj Indl. Estate, Off. Mahakali Caves Road,
Andheri (E), Mumbai - 400 093. Phone : +91 - 22 - 2687 7023
Fax : +91 - 22 - 2687 9078 email : cspl@condotsystems.com
web : www.condotsystems.com

Branch Office

Chandigarh : +91 - 172 - 5096660
Delhi : +91 - 11 - 22015055 / 22455850
Indore : +91 - 731 - 2431056 / 2432056
Gujarat : +91 - 79 - 26577140
Chennai : +91 - 44 - 43558449 / 45566261
Bangalore / Hyderabad : +91 - 80 - 64510001 / 43449013